



# REPS1 Polyclonal Antibody

|                           |   |
|---------------------------|---|
| <b>Catalog No</b>         | YP-Ab-04116   |
| <b>Isotype</b>            | IgG   |
| <b>Reactivity</b>         | Human;Rat;Mouse;  |
| <b>Applications</b>       | WB;ELISA;IHC  |
| <b>Gene Name</b>          | REPS1   |
| <b>Protein Name</b>       | RalBP1-associated Eps domain-containing protein 1   |
| <b>Immunogen</b>          | The antiserum was produced against synthesized peptide derived from human REPS1. AA range:597-646   |
| <b>Specificity</b>        | REPS1 Polyclonal Antibody detects endogenous levels of REPS1 protein.   |
| <b>Formulation</b>        | Liquid in PBS containing 50% glycerol, 0.5% BSA and 0.02% sodium azide.   |
| <b>Source</b>             | Polyclonal, Rabbit,IgG  |
| <b>Purification</b>       | The antibody was affinity-purified from rabbit antiserum by affinity-chromatography using epitope-specific immunogen.   |
| <b>Dilution</b>           | WB 1:500-2000;IHC-p 1:50-300; ELISA 2000-20000  |
| <b>Concentration</b>      | 1 mg/ml   |
| <b>Purity</b>             | ≥90%  |
| <b>Storage Stability</b>  | -20°C/1 year  |
| <b>Synonyms</b>           | REPS1; RalBP1-associated Eps domain-containing protein 1; RalBP1-interacting protein 1  |
| <b>Observed Band</b>      | 80kD  |
| <b>Cell Pathway</b>       | Membrane, clathrin-coated pit . Colocalize with ITSN1 at the plasma membrane in structures that are most probably clathrin-coated pits.   |
| <b>Tissue Specificity</b> | Widely expressed with highest levels in heart and testis.   |
| <b>Function</b>           | function:May coordinate the cellular actions of activated EGF receptors and Ral-GTPases.,PTM:EGF stimulates phosphorylation on Tyr-residues.,similarity:Contains 1 EF-hand domain.,similarity:Contains 1 EH domain.,subunit:Homodimer (Potential). Interacts with RAB11FIP2. Interacts with RALBP1, CRK and GRB2. Binding to RALBP1 does not affect its Ral-binding activity. Forms a complex with the SH3 domains of CRK and GRB2 which may link it to an EGF-responsive tyrosine kinase., |
| <b>Background</b>         | This gene encodes a signaling adaptor protein with two EH domains that interacts with proteins that participate in signaling, endocytosis and cytoskeletal changes. The encoded protein has been found in association with intersectin 1 and Src homology 3-domain growth factor receptor-bound 2-like (endophilin) interacting protein 1 when intersectin 1 was isolated from clathrin-coated pits. The encoded protein has also been shown to interact with amphiphysin, a cytoplasmic    |



protein at the surface of synaptic vesicles. Alternative splicing results in multiple transcript variants encoding different isoforms. [provided by RefSeq, Mar 2014],

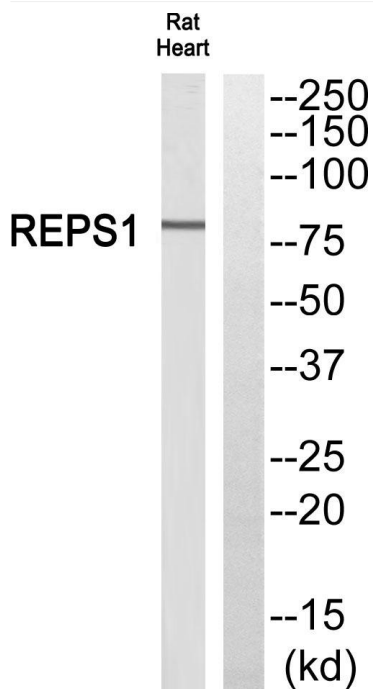
**matters needing attention**

Avoid repeated freezing and thawing!

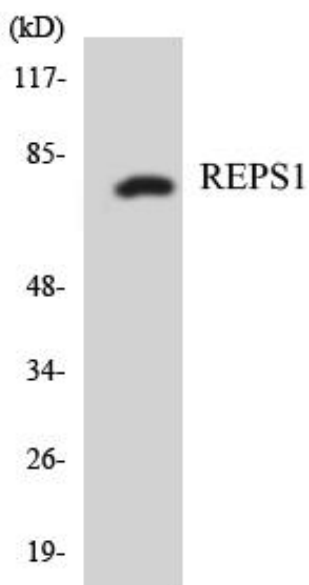
**Usage suggestions**

This product can be used in immunological reaction related experiments. For more information, please consult technical personnel.

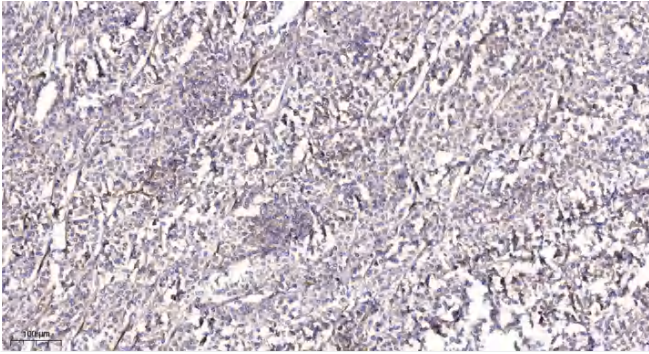
**Products Images**



Western blot analysis of REPS1 Antibody. The lane on the right is blocked with the REPS1 peptide.



Western blot analysis of the lysates from K562 cells using REPS1 antibody.



Immunohistochemical analysis of paraffin-embedded human Colon cancer. 1, Antibody was diluted at 1:200(4° overnight). 2, Tris-EDTA,pH9.0 was used for antigen retrieval. 3,Secondary antibody was diluted at 1:200(room temperature, 45min).